

MODULE 5 L06

Brain Blood Vessels

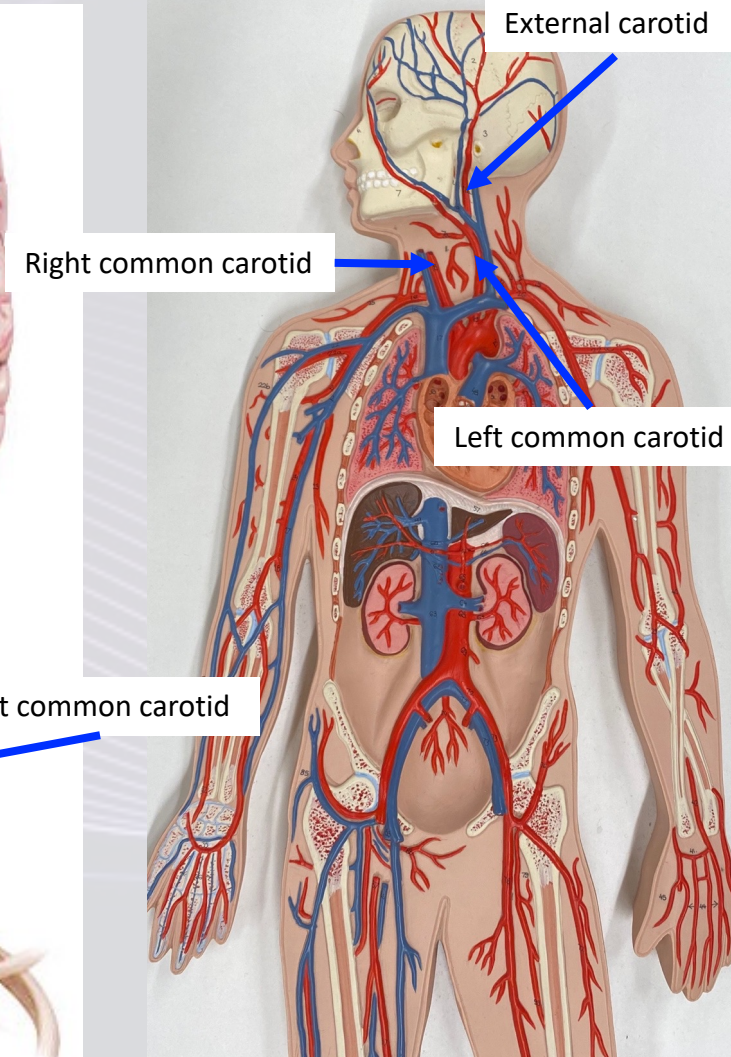
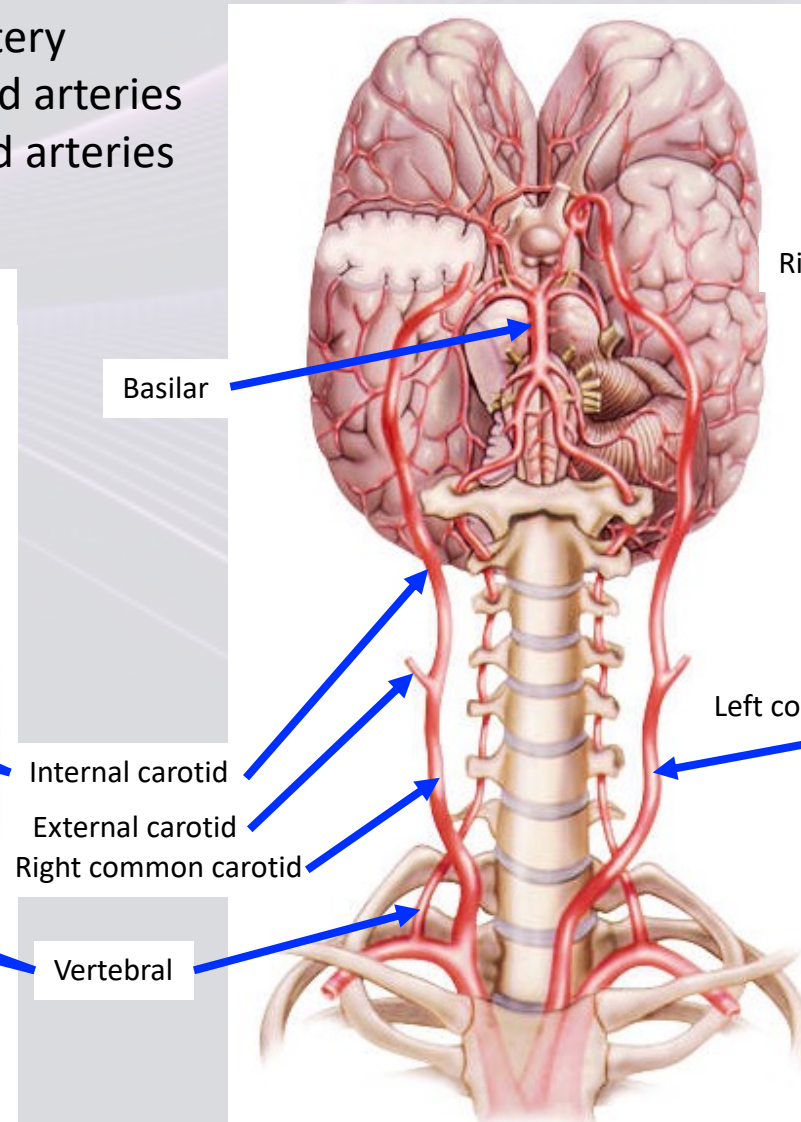
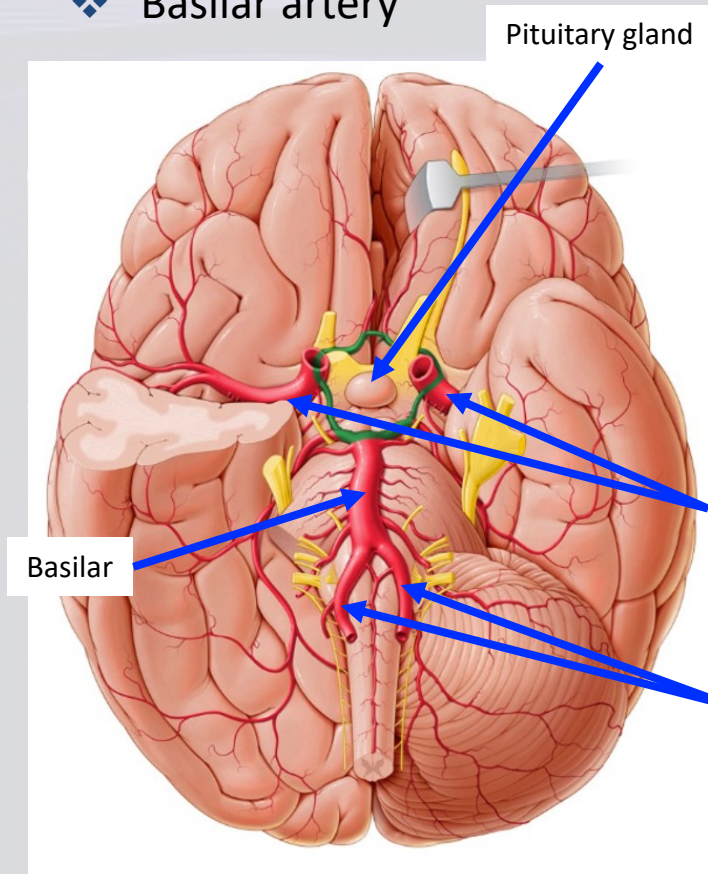
Dr. Lisa Brinn

lbrinn@fiu.edu



D. Arterial Blood Supply to Brain

- Right and left common carotid artery
 - ❖ Right and left external carotid arteries
 - ❖ Right and left internal carotid arteries
- Right and left vertebral arteries
 - ❖ Basilar artery



Venous Blood Removal From Brain

- Right and left internal jugular veins



- Right and left brachiocephalic veins



- Superior vena cava

